

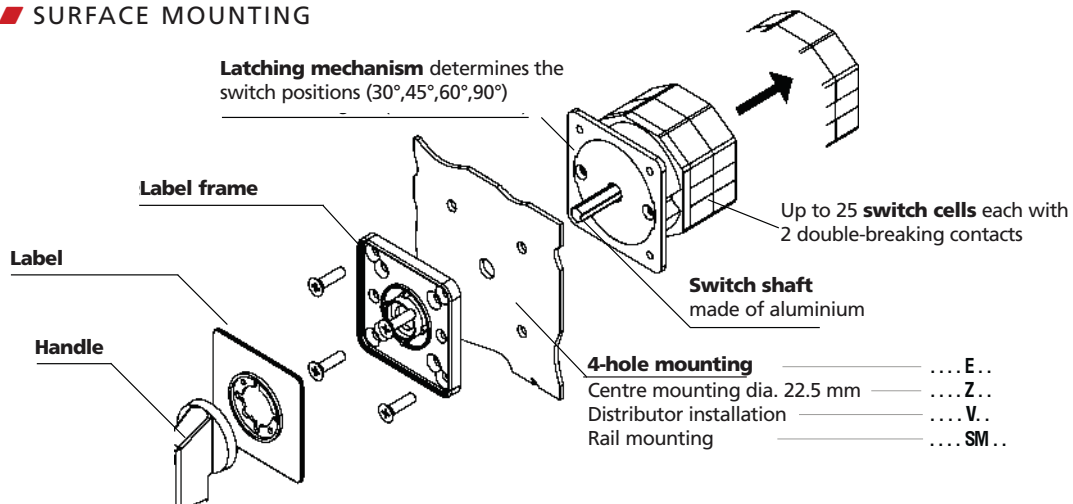
# MAIN SWITCHES, CONTROL SWITCHES, COMMAND AND SIGNALLING DEVICES

## ■ CAM SWITCHES 10-32 A – GENERAL INFORMATION

### ■ SCHRACK INFO

Cam switches are suitable for virtually any desired application and can be used, e.g., as motor switches, main switches, control switches and instrument switches.

### ■ SURFACE MOUNTING



## ■ CAM SWITCHES FOR PANEL MOUNTING



IN005120

### ■ SCHRACK INFO

- For 4-hole pattern
- Front mounting
- Switching capacity: AC 3 up to 15 kW
- Nominal current: 20 A to 50 A
- Type E
- Degree of protection: IP 65

## ■ CAM SWITCHES WITH CENTRAL FASTENING



IN025120

### ■ SCHRACK INFO

- 22 mm diameter
- Degree of protection: IP 65

## ■ CAM SWITCHES FOR DIN-RAIL MOUNTING



IN085220

### ■ SCHRACK INFO

- Switching capacity: up to 11 kW
- Nominal current: up to 32 A
- Type: SMA
- Degree of protection: IP 40

## ■ CAM SWITCHES PLASTIC ENCLOSED



IN036120

### ■ SCHRACK INFO

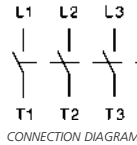
- Switching capacity: AC 3 up to 15 kW
- Nominal current: up to 32 A
- Type P (insulated enclosure) and G (cast enclosure)
- Degree of protection: IP 40

# MAIN SWITCHES, CONTROL SWITCHES, COMMAND AND SIGNALLING DEVICES

## ■ CAM SWITCHES, ON-OFF SWITCHES FOR PANEL MOUNTING, IP65 (IP40)



IN005120

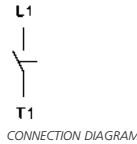


DESCRIPTION	TYPE	EAN CODE	AVAILABLE	ORDER NO.
1-pole/20 A	M10H E A1	9004840040630		<a href="#">IN005120</a>
2-pole/20 A	M10H E A2	9004840040647		<a href="#">IN005220</a>
3-pole/20 A/5.5 kW	M10H E A3	9004840040654		<a href="#">IN005320</a>
1-pole/20 A/ON-OFF	M10H E A1+0035	9004840110159		<a href="#">IN005121</a>

## ■ CAM SWITCHES, ON-OFF KEY SWITCHES FOR PANEL MOUNTING, IP65 (IP40)



IN005122



DESCRIPTION	TYPE	EAN CODE	AVAILABLE	ORDER NO.
Key switch, 1-pole/20 A/ON-OFF	M10H E A1+S A+0025+8100	9004840122619		IN005122

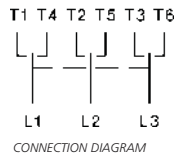
## ■ CAM SWITCHES, CHANGEOVER SWITCHES WITH ZERO POSITION FOR PANEL MOUNTING, IP65 (IP40)



IN006320



IN006122



DESCRIPTION	TYPE	EAN CODE	AVAILABLE	ORDER NO.
1-pole/20 A	M10H E U1	9004840040661		<a href="#">IN006120</a>
2-pole/20 A	M10H E U2	9004840040678		<a href="#">IN006220</a>
3-pole/20 A/5.5 kW	M10H E U3	9004840040685		<a href="#">IN006320</a>
1-pole/20 A/MAN-OFF- AUTO	M10H E U1+0885	9004840110128		<a href="#">IN006121</a>
1-pole/20 A/HAND-0- AUTO	M10H E U1+0095	9004840533217		<a href="#">IN006122</a>
2-pole/20 A/MAN-OFF- AUTO	M10H E U2+0885	9004840110135		<a href="#">IN006221</a>

# MAIN SWITCHES, CONTROL SWITCHES, COMMAND AND SIGNALLING DEVICES

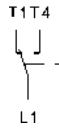
## CAM SWITCHES, CHANGEOVER SWITCHES WITHOUT ZERO POSITION FOR PANEL MOUNTING, IP65 (IP40)



IN007122



IN007121



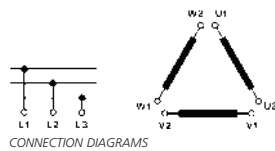
CONNECTION DIAGRAM

DESCRIPTION	TYPE	EAN CODE	AVAILABLE	ORDER NO.
1-pole/20 A	M10H E W1	9004840122640		IN007122
1-pole/20 A/HAND- AUTO	M10H E W1+082S	9004840110142		IN007121

## CAM SWITCHES, WYE-DELTA SWITCHES FOR PANEL MOUNTING, IP65 (IP40)



IN108900



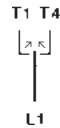
CONNECTION DIAGRAMS

DESCRIPTION	TYPE	EAN CODE	AVAILABLE	ORDER NO.
Wye-delta switch, 32 A/15 kW	N20 E SD	9004840067828		IN108900

## CAM SWITCHES, CHANGEOVER SWITCHES WITH SPRING RETURN FOR PANEL MOUNTING, IP65 (IP40)



IN004120



CONNECTION DIAGRAM

DESCRIPTION	TYPE	EAN CODE	AVAILABLE	ORDER NO.
Changeover switch with spring return, 20 A	M10H E UR1	9004840122589		IN004120



### I KNOW WHERE TO FIND IT!

#### WITH THE SCHRACK TECHNIK LIVE-PHONE APP

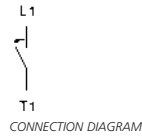
- Access technical product information at any time and from everywhere
- See availability and price immediately
- Order desired products easily

# MAIN SWITCHES, CONTROL SWITCHES, COMMAND AND SIGNALLING DEVICES

## CAM SWITCHES, ROTARY SWITCH FOR PANEL MOUNTING, IP65



IN008120

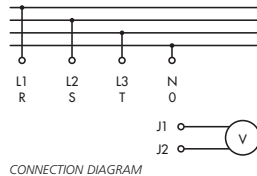


DESCRIPTION	TYPE	EAN CODE	AVAILABLE	ORDER NO.
Rotary switch "Start", 1-pole, 20 A	M10H E SE	9004840122558		IN008120

## CAM SWITCHES, VOLTMETER SWITCH FOR PANEL MOUNTING, IP65



IN009V00



### SCHRACK INFO

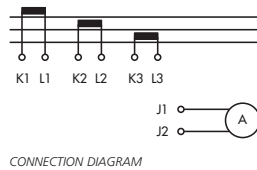
- 3 line to line and 3 phase to neutral voltages

DESCRIPTION	TYPE	EAN CODE	AVAILABLE	ORDER NO.
3 line to line and 3 phase to neutral voltages, 1-pole/20 A	M10H E V1+503	9004840110111		IN009V00

## CAM SWITCHES, AMMETER SWITCH FOR PANEL MOUNTING, IP65



IN009A00



DESCRIPTION	TYPE	EAN CODE	AVAILABLE	ORDER NO.
Ammeter switch for 3 current transformer circuits, 1-pole/20 A	M10H E M31+504	9004840110104		IN009A00



### I KNOW WHERE TO FIND IT!

THE SCHRACK TECHNIK WEB SHOP WITH NAVIGATOR  
[WWW.SCHRACK.COM](http://WWW.SCHRACK.COM)

- Finding product information made easy
- Buying products around the clock
- Quick access customer service



# MAIN SWITCHES, CONTROL SWITCHES, COMMAND AND SIGNALLING DEVICES

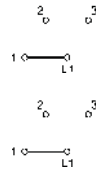
## CAM SWITCHES, STEP SWITCHES 1- AND 2-POLE WITHOUT ZERO POSITION FOR PANEL MOUNTING, IP65



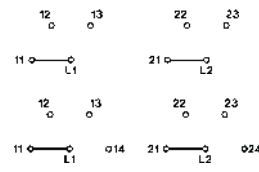
IN003121



IN003122



CONNECTION DIAGRAM, 1-pole



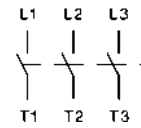
CONNECTION DIAGRAM, 2-pole

DESCRIPTION	TYPE	EAN CODE	AVAILABLE	ORDER NO.
<b>1-POLE</b>				
3-step switch/20 A	M10H E ST31	9004840110166		IN003121
4-step switch/20 A	M10H E ST41	9004840110173		IN003122
<b>2-POLE</b>				
3-step switch/20 A	M10H E ST32	9004840122565		IN003123
4-step switch/20 A	M10H E ST42	9004840122572		IN003124
<b>3-POLE</b>				
4-step switch/20 A	M10H E ST43	9004840653427		IN003125
<b>4-POLE</b>				
4-step switch/20 A	M10H E ST44	9004840653434		IN003126

## CAM SWITCHES, ON-OFF SWITCHES WITH CENTRAL FASTENING, DIA. 22 mm, IP65



IN025120



CONNECTION DIAGRAM

DESCRIPTION	TYPE	EAN CODE	AVAILABLE	ORDER NO.
1-pole/20 A	M10H Z A1	9004840041071		IN025120
2-pole/20 A	M10H Z A2	9004840041088		IN025220
3-pole/20 A/5.5 kW	M10H Z A3	9004840041095		IN025320
3-pole/32 A/11 kW	M20 Z A3	9004840041699		IN125325



### I KNOW WHERE TO FIND IT!

WITH THE SCHRACK TECHNIK LIVE-PHONE APP

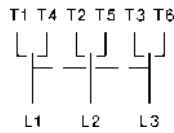
- Access technical product information at any time and from everywhere
- See availability and price immediately
- Order desired products easily

# MAIN SWITCHES, CONTROL SWITCHES, COMMAND AND SIGNALLING DEVICES

## **■** CAM SWITCHES, CHANGEOVER SWITCHES WITH ZERO POSITION WITH CENTRAL FASTENING, DIA. 22 mm, IP65



IN026220



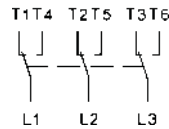
CONNECTION DIAGRAM

DESCRIPTION	TYPE	EAN CODE	AVAILABLE	ORDER NO.
1-pole/20 A	M10H Z U1	9004840040975		IN026120
2-pole/20 A	M10H Z U2	9004840040814		IN026220
3-pole/20 A/5.5 kW	M10H Z U3	9004840040890		IN026320

## **■** CAM SWITCHES, CHANGEOVER SWITCHES WITHOUT ZERO POSITION WITH CENTRAL FASTENING, DIA. 22 mm, IP65



IN027220



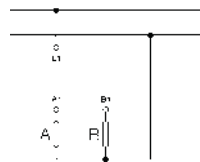
CONNECTION DIAGRAM

DESCRIPTION	TYPE	EAN CODE	AVAILABLE	ORDER NO.
1-pole/20 A	M10H Z W1	9004840041019		IN027120
2-pole/20 A	M10H Z W2	9004840040777		IN027220
3-pole/20 A/5.5 kW	M10H Z W3	9004840041101		IN027320

## **■** CAM SWITCHES, GROUP SWITCHES 1-POLE, 2 GROUPS WITH CENTRAL FASTENING, DIA. 22 mm, IP65



IN020901



CONNECTION DIAGRAM

DESCRIPTION	TYPE	EAN CODE	AVAILABLE	ORDER NO.
Group switch, 1-pole/20 A	M10H Z GR11	9004840040692		IN020901

# MAIN SWITCHES, CONTROL SWITCHES, COMMAND AND SIGNALLING DEVICES

## CAM SWITCHES, ROTARY SWITCH WITH CENTRAL FASTENING, DIA. 22 mm, IP65



IN02C102



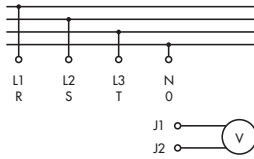
CONNECTION DIAGRAM

DESCRIPTION	TYPE	EAN CODE	AVAILABLE	ORDER NO.
Rotary switch "Start", 1-pole, 20 A	M10HZ SE	9004840383881		IN02C102

## CAM SWITCHES, VOLTMETER SWITCH WITH CENTRAL FASTENING, DIA. 22 mm, IP65



IN009V02



CONNECTION DIAGRAM

### SCHRACK INFO

- 3 line to line and 3 phase to neutral voltages

DESCRIPTION	TYPE	EAN CODE	AVAILABLE	ORDER NO.
3 line to line and 3 phase to neutral voltages, 1-pole/20 A	M10HE V1	9004840223187		IN009V02

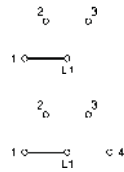
## CAM SWITCHES, CHANGEOVER SWITCH, 1-POLE WITHOUT ZERO POSITION WITH CENTRAL FASTENING, DIA. 22 mm, IP65



IN023901



IN023902



CONNECTION DIAGRAM, 1-pole

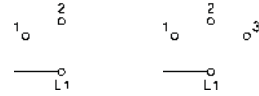
DESCRIPTION	TYPE	EAN CODE	AVAILABLE	ORDER NO.
3 stages/20 A	M10HZ ST31	9004840041040		IN023901
4 stages/20 A	M10HZ ST41	9004840041057		IN023902

# MAIN SWITCHES, CONTROL SWITCHES, COMMAND AND SIGNALLING DEVICES

## ■ CAM SWITCHES, STEP SWITCH, 1-POLE WITH ZERO POSITION WITH CENTRAL FASTENING, DIA. 22 mm, IP65



IN023903



CONNECTION DIAGRAMS

DESCRIPTION	TYPE	EAN CODE	AVAILABLE	ORDER NO.
2 stages/ 20 A	M10H Z ST021	9004840655049		<a href="#">IN023904</a>
3 stages/20 A	M10H Z ST031	9004840041064		<a href="#">IN023903</a>

## ■ ACCESSORIES FOR CAM SWITCHES WITH CENTRAL FASTENING



IN16001



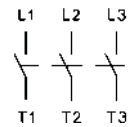
IN16000

DESCRIPTION	TYPE	EAN CODE	AVAILABLE	ORDER NO.
T-handle black for switches M10, M10H, M20	A1535	9004840106930		IN16001
T-handle blue for switches M10, M10H, M20	A1549	9004840106923		IN16000

## ■ CAM SWITCHES, ON-OFF SWITCHES FOR DIN-RAIL MOUNTING, IP40



IN085220



CONNECTION DIAGRAM

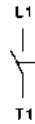
DESCRIPTION	TYPE	EAN CODE	AVAILABLE	ORDER NO.
1-pole/20 A	M10H SMA A1	9004840041439		<a href="#">IN085120</a>
2-pole/20 A	M10H SMA A2	9004840041446		<a href="#">IN085220</a>
3-pole/20 A/5.5 kW	M10H SMA A3	9004840041453		<a href="#">IN085320</a>

# MAIN SWITCHES, CONTROL SWITCHES, COMMAND AND SIGNALLING DEVICES

## CAM SWITCHES, ON-OFF KEY SWITCHES FOR DIN-RAIL MOUNTING, IP40



IN085121



CONNECTION DIAGRAM

DESCRIPTION	TYPE	EAN CODE	AVAILABLE	ORDER NO.
Key switch, 1-pole/20 A	M10H SMA A1+S A	9004840378931		IN085121

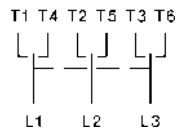
## CAM SWITCHES, CHANGEOVER SWITCHES WITH ZERO POSITION FOR DIN-RAIL MOUNTING, IP40



IN086220



IN086121



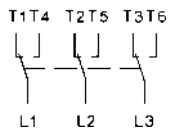
CONNECTION DIAGRAM

DESCRIPTION	TYPE	EAN CODE	AVAILABLE	ORDER NO.
1-pole/20 A	M10H SMA U1	9004840041460		IN086120
2-pole/20 A	M10H SMA U2	9004840041477		IN086220
3-pole/20 A	M10H SMA U3	9004840041484		IN086320
1-pole/20 A/HAND-0- AUTO	M10H SMA U1+009S	9004840094268		IN086121
1-pole/20 A/MAN-0- AUTO	M10H SMA U1+081S	9004840094275		IN086122
1-pole/20 A/TAG-0-NACHT	M10H SMA U1+143S	9004840094282		IN086123

## CAM SWITCHES, CHANGEOVER SWITCHES WITHOUT ZERO POSITION FOR DIN-RAIL MOUNTING, IP40



IN087220



CONNECTION DIAGRAM

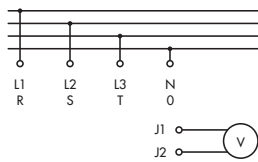
DESCRIPTION	TYPE	EAN CODE	AVAILABLE	ORDER NO.
1-pole/20 A	M10H SMA W1	9004840041491		IN087120
2-pole/20 A	M10H SMA W2	9004840041507		IN087220
3-pole/20 A	M10H SMA W3	9004840041514		IN087320

# MAIN SWITCHES, CONTROL SWITCHES, COMMAND AND SIGNALLING DEVICES

## CAM SWITCHES, VOLTMETER SWITCHES FOR DIN-RAIL MOUNTING, IP40



IN009V01



CONNECTION DIAGRAM

### SCHRACK INFO

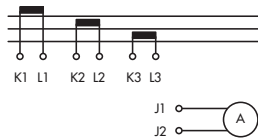
- 3 line to line and 3 phase to neutral voltages

DESCRIPTION	TYPE	EAN CODE	AVAILABLE	ORDER NO.
3 line to line and 3 phase to neutral voltages, 1-pole/20 A	M10H SMA V1	9004840164503		IN009V01

## CAM SWITCHES, AMMETER SWITCHES FOR DIN-RAIL MOUNTING, IP40



IN009A01



CONNECTION DIAGRAM

DESCRIPTION	TYPE	EAN CODE	AVAILABLE	ORDER NO.
Ammeter switch for 3 current transformer circuits, 1-pole/20 A	M10H SMA M31	9004840164497		IN009A01

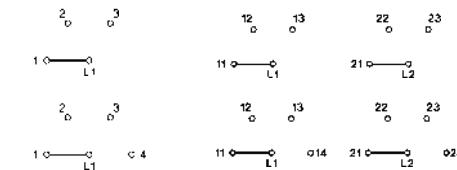
## CAM SWITCHES, STEP SWITCHES 1- AND 2-POLE WITHOUT ZERO POSITION FOR DIN-RAIL MOUNTING, IP40



IN083121



IN083220



CONNECTION DIAGRAM, 1-pole

CONNECTION DIAGRAM, 2-pole

DESCRIPTION	TYPE	EAN CODE	AVAILABLE	ORDER NO.
<b>1-POLE</b>				
3-step switch/20 A	M10H SMA ST31	9004840122602		IN083120
4-step switch/20 A	M10H SMA ST41	9004840122626		IN083220
<b>2-POLE</b>				
3-step switch/20 A	M10H SMA ST32	9004840122596		IN083121
4-step switch/20 A	M10H SMA ST42	9004840122633		IN083221

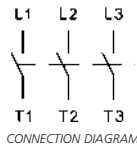


# MAIN SWITCHES, CONTROL SWITCHES, COMMAND AND SIGNALLING DEVICES

## ■ CAM SWITCHES, ON-OFF SWITCH, PLASTIC ENCLOSED, IP40



IN035220



### ■ SCHRACK INFO

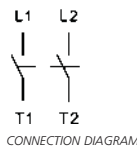
- Insulated enclosure

DESCRIPTION	TYPE	EAN CODE	AVAILABLE	ORDER NO.
1-pole/20 A	M10 PA1+K6	9004840041217		IN035120
2-pole/20 A	M10 PA2+K6	9004840040852		IN035220
3-pole/20 A/5.5 kW	M10 PA3+K6	9004840041224		IN035320
3-pole/32 A/11 kW	N20 PA3+K6	9004840041705		IN135325

## ■ CAM SWITCHES, HEATING EMERGENCY SWITCHES, 2-POLE, PLASTIC ENCLOSED, IP40



IN032009



### ■ SCHRACK INFO

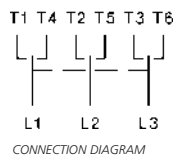
- Insulated enclosure

DESCRIPTION	TYPE	EAN CODE	AVAILABLE	ORDER NO.
Heating emergency stop switch 2-pole/20 A	M10 PA2+904465	9004840041200		IN032009

## ■ CAM SWITCHES, CHANGEOVER SWITCHES WITH ZERO POSITION, PLASTIC ENCLOSED, IP40



IN036320



### ■ SCHRACK INFO

- Insulated enclosure

DESCRIPTION	TYPE	EAN CODE	AVAILABLE	ORDER NO.
1-pole/20 A	M10 PU1	9004840041231		IN036120
2-pole/20 A	M10 PU2	9004840041248		IN036220
3-pole/20 A/5.5 kW	M10 PU3	9004840041255		IN036320



Order no. blue: on stock, usually ready for delivery on the day of order!



# MAIN SWITCHES, CONTROL SWITCHES, COMMAND AND SIGNALLING DEVICES

## CAM SWITCHES – TECHNICAL DATA

Data meet IEC 947-3, IEC 947-5-1, VDE 0660, EN 60947-3, EN 60947-5-1, SEV, CEE24

Type		M10	M10H	M20	
<b>Them. nom. current</b> I <sub>n</sub> open	A	20	20	32	
<b>Them. nom. current</b> I <sub>n</sub> sealed	A	20	20	32	
<b>Nominal operating voltage</b> U <sub>n</sub>	A	440	690 <sup>1)</sup>	690 <sup>1)</sup>	
<b>Breaker conditions</b> <sup>2)</sup> in acc. with VDE, IEC up to		440	440	440	
<b>Breaking capacity</b> I <sub>eff</sub>					
3 x 220-440V	A	160	160	220	
3 x 500V	A	-	100	160	
3 x 660-690V	A	80	120	120	
<b>Utilisation cat. AC21A, AC21B</b> Switching of resistive load including slight overload					
<b>Nominal operating current</b> I <sub>n</sub>	A	20	20	32	
<b>Utilisation cat. AC23A, AC23B</b> Switching of motors and other highly inductive loads					
<b>Nominal operating current</b> I <sub>n</sub> 400 V A		16	16	30	
<b>Nominal power</b> 220-240V	kW	4	4	7,5	
3-phase, 3-pole	380-440V	7,5	7,5	15	
	500V	-	7,5	15	
	660-690V	-	7,5	15	
<b>Wye-delta switch</b> for cage motors					
<b>Nominal power</b>					
3-phase, 3-pole	220-240V	3,7	3,7	7,5	
	380-415V	7,5	7,5	15	
<b>Utilisation category AC3</b> Switching of 3-phase AC motors					
<b>Nominal operating current</b> I <sub>n</sub> 400 V A		12	12	22	
<b>Nominal power</b> 220-240V	kW	3	3	5,5	
3-phase, 3-pole	380-440V	5,5	5,5	11	
	500V	-	5,5	11	
	660-690V	-	5,5	11	
<b>Utilisation category AC4</b> Cage motors, jog operation					
<b>Nominal power</b> 220-240V	kW	0,55	0,55	2,2	
3-phase, 3-pole	380-440V	1,5	1,5	4	
	500V	-	1,5	4	
	660-690V	-	1,5	4	
<b>Utilisation category AC15</b> Switching of magn. drives, contactors, valves, pulling magnets					
<b>Nominal operating current</b> I <sub>n</sub>					
up to 240V	A	6	6	12	
380 - 440V	A	4	4	6	
2-pole breaking	500V	-	5	8	
<b>Utilisation cat. DC21A, DC21B</b> Switching of resistive load, time constant L/R" 1 ms					
<b>Nominal operating current</b> I <sub>n</sub>					
1-pole	30V	A	20	20	32
	60V	A	4	4	6
	110V	A	0,6	0,6	3
	220V	A	0,3	0,3	0,8
	440V	A	-	-	0,4
<b>Utilisation category DC3 - DC5</b> Switching of shunt and series motors, time constant L/R" 15 ms					
<b>Nominal operating current</b> I <sub>n</sub>					
1-pole	30V	A	8	8	13
	60V	A	1	1	2,4
	110V	A	0,3	0,3	0,5
Degree of protection from rear		IP00	IP20	IP00	

1) Applies to: Mains with earthed Y point, overvoltage category I to III, pollution degree 3: U<sub>imp</sub> = 6 kV. Values for other conditions on request.

2) The breaker condition in acc. with IEC 947-1 and VDE 0660 apply to: systems with earthed Y point, overvoltage category III and inhomogeneous field.

# MAIN SWITCHES, CONTROL SWITCHES, COMMAND AND SIGNALLING DEVICES

## CAM SWITCHES – TECHNICAL DATA

Data meet IEC 947-3, IEC 947-5-1, VDE 0660, EN 60947-3, EN 60947-5-1

Type		M10 P	M10H	M20
<b>Terminal capacity</b>				
solid or stranded	mm <sup>2</sup>	1-2.5	1-2.5 <sup>1)</sup>	1.5-6
finely stranded	mm <sup>2</sup>	0.75-2.5	0.75-2.5 <sup>1)</sup>	1-4
finely stranded with end sleeve	mm <sup>2</sup>	0.75-2.5	0.75-1.5	1-4
Clampable conductor per terminal		2	2	2
Terminal screw		M3	M3.5	M4
Tightening torque	Nm lb.inch	0.6-1.2 5-11	0.8-1.4 7-12	1.2-1.8 11-16
<b>Short-circuit protection</b>				
Max. fuse, gL (gG)	A	20	20	35
Rated short-time current protection (1-second power)	A	250	250	400
Conditional rated short-circuit current kA <sub>eff</sub>		10	10	10
<b>Short-term load capacity</b>				
Load duration	3s A	100	100	200
	10s A	60	60	130
Values apply only to contacts that are already closed	30s A	35	35	85
	60s A	25	25	65
<b>Power loss at AC21A</b>				
per pole	A W	20 0.6	20 0.5	32 0.9
<b>Switching of capacitive load</b>				
Maximum making capacity up to 500 V	A	140	140	300

Data acc. to cULus

Type		M10 P	M10H	M20
Rated operating voltage	V~	300	600	600
Rated operating current	"General Use" with jumper	A A	20 15	35 25
DOL rating, 3-phase	110-120V 200-208V 220-240V	hp hp hp	1½ 2 3	1½ 2 3
	440-480V 550-600V	hp hp	- 7½	5 10 15
DOL rating, 1-phase	110-120V 200-208V 220-240V	hp hp hp	½ 1 1½	½ 1 1½
Fuse size (RK5)	Manual motor controller and motor disconnect	A	40 <sup>2)</sup>	40 80
Heavy pilot duty	AC	A300	A600	A600
<b>Terminal capacity</b>				
solid		AWG	12 - 20	12 - 20
finely stranded		AWG	14 - 20	14 - 20
Tightening torque		Nm lb.inch	1.7 15	1-1.7 9-15
				1.7-2.8 15-25

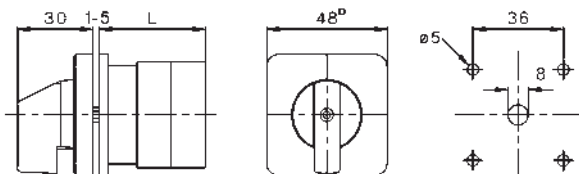
1) Maximum terminal capacity with prepared conductor  
2) 5KA / 300V

# MAIN SWITCHES, CONTROL SWITCHES, COMMAND AND SIGNALLING DEVICES

## CAM SWITCHES – DIMENSIONS

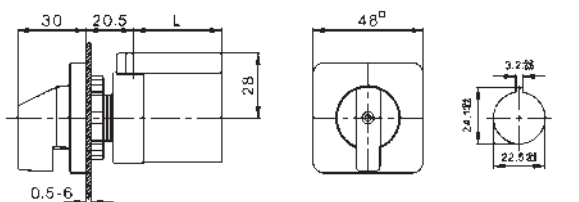
### FOR PANEL MOUNTING

Cam switch for panel mounting  
M10H E..

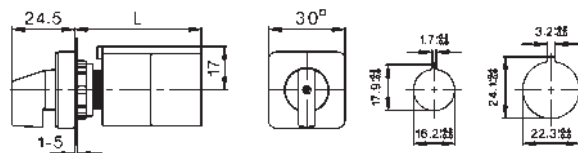


### FOR CENTRE MOUNTING

Cam switch for central fixing  
M10H Z.., M20 Z..



M4H Z..



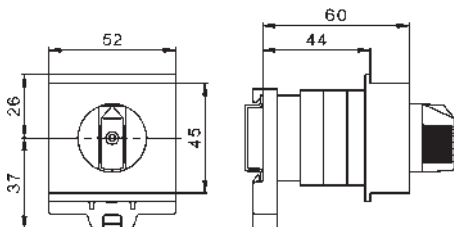
### Dimension L for switching programs

Switching programs	A1, A2, U1, W1, UR1, SE, SA, GR11, ST021 1 switch cell	A3, U2, W2 ST31, ST41, ST031 2 switch cells	U3, W3 V1, M31, ST32 3 switch cells	ST42 4 switch cells
M4H	51	62.5	74.5	86.5
M10H	36.5	46	55.5	65
M20	38.5	51	63.5	76

### FOR DIN-RAIL MOUNTING

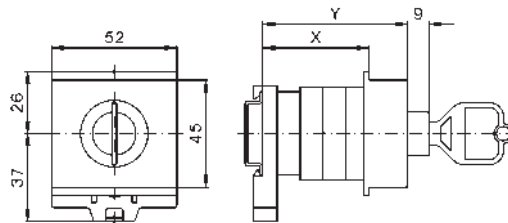
Cam switch for DIN-rail mounting

M10H SMA.. 1-3 switch cells  
M20 SMA.. 1,2 switch cells



Key switch for DIN-rail mounting

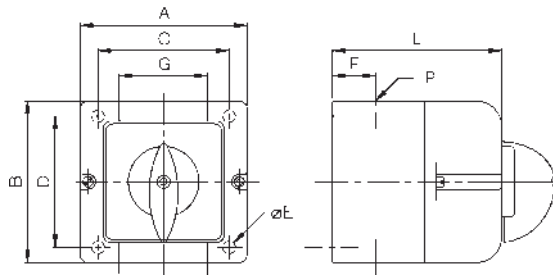
Type	Dimension X for switch cells				Dimension Y for switch cells		
	1	2	3	4	1	2	3
M10H	44	75	75	91	60	90	90
M20	59	75	75	91	75	90	90



## ■ CAM SWITCHES – DIMENSIONS

### ■ INSULATED ENCLOSURE

Switch with insulated enclosure  
M10 P..



Type	A	B	C	D	E	F	G	P	Dimension L for ... switch cells			
									1	2	3	4
M10	66	64	50	36	5	15,5	26	M20	43	52	62	71